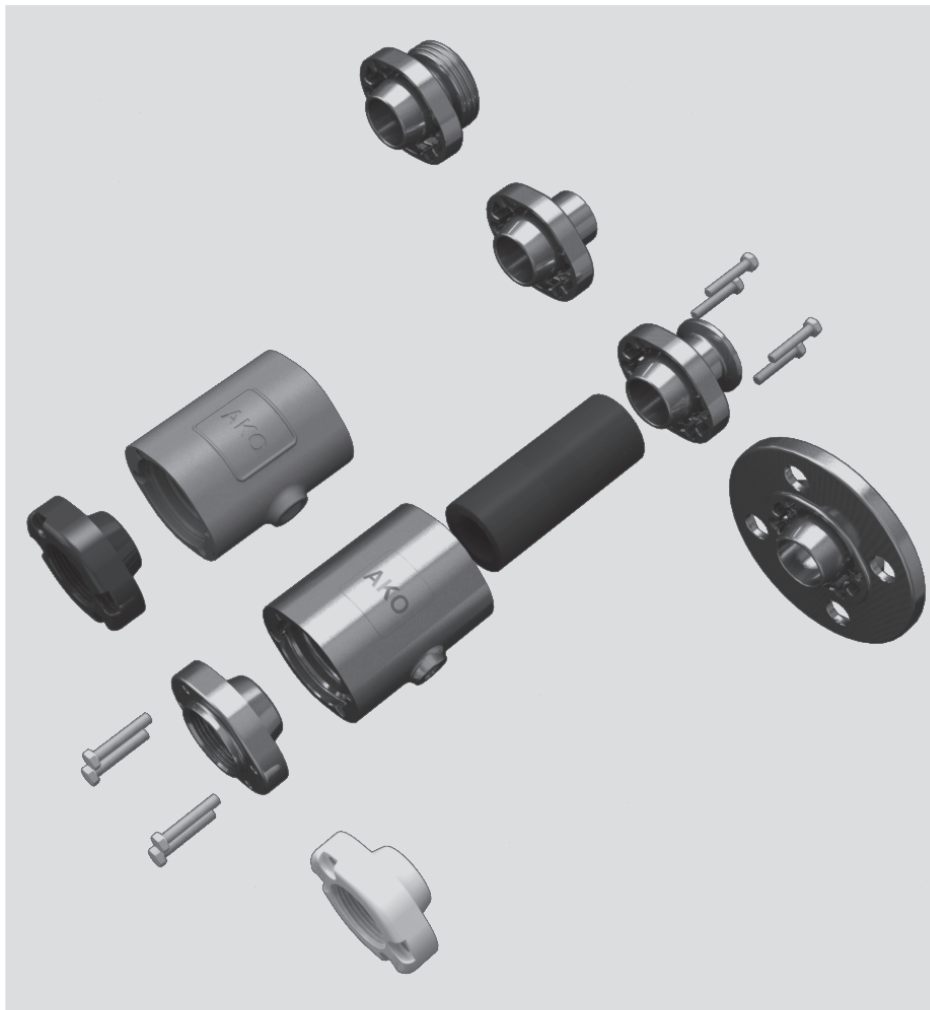


New!

Air operated Pinch Valve type VMC



Flange



Internal Thread



Tri-Clamp



Weld-on ends



Threaded spigot

▲ The flexible modular system for solvable and aseptic piping connections!

The ideal solution for isolation and regulation of solids of all kinds, suspensions, pastes, gaseous, fibrous and viscous media.

Advantages:

- Flexible modular system
- Various connection options
- Extremely compact
- Light weight
- Complete free passage
- No dead spots
- Easy maintenance and re-sleeving
- 100% tight shut off
- Competitive



Air operated Pinch Valve type VMC

Industrial areas:

- Food/ pharmaceutical/ beverage industry
- Chemical industry
- Pneumatic conveying systems
- Pigments and granules
- Ceramics/ glass/ plastic industry
- Extraction systems
- Dosing systems
- Filling and weighing systems
- Air venting systems
- etc.

Connections with various aseptic connections available!

Connection options:

- Flange Connection
- Internal Thread Connection G / NPT
- Tri-Clamp
- Weld-on ends
- Threaded spigot (RJT Connection)



Special, conductive models with a separate earthing system, which are suitable for use in areas at risk of explosions (EX) in zones 1, 2, 21 and 22 are also available.

The air operated Pinch Valves of VMC series fulfil all requirements of the Pressure Equipment Directive 97/23/EC.

Body:

Stainless steel 1.4408
Aluminium AlSi10Mg
Plastic POM

Socket Connection:

Stainless steel 1.4404
Plastic POM

Sleeves:

Natural rubber antiabrasive, EPDM, Nitrile, CSM, CR (Neoprene), Silicone, Viton
Other materials on request.

Sleeves (FDA approved)

Natural rubber food quality, EPDM food quality, Nitrile food quality

Operating / medium pressure max.: ~ 6 bar

Differential pressure: 2-3.5 bar

Control / closing pressure max.: 8 bar

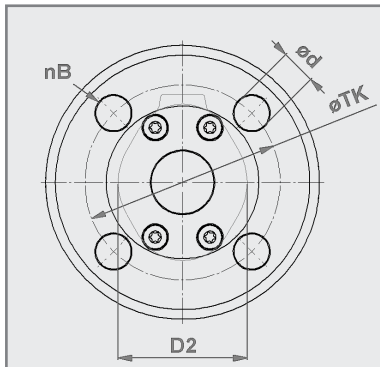
varies depending on diameter / sleeve

Technical details subject to change without notice.

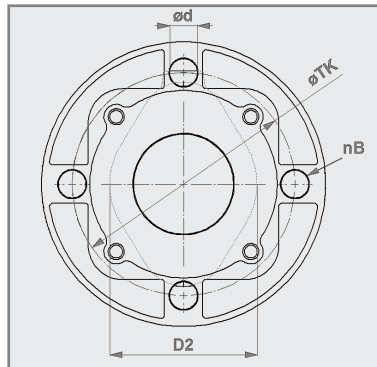
AKO UK Ltd

12 Rutherford Way, Drayton Fields Industrial Estate, Daventry, Northamptonshire, NN11 8XW
Tel: 01327 312 747 • Fax: 01327 312 565 • E-mail: sales@ako-valves.com • Web: www.pinch-valves.com

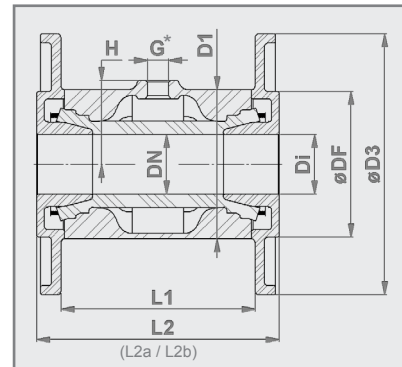
Air operated Pinch Valve - Flange connection



DN25 - DN50



DN65 - DN100



* DIN EN ISO 228 "G"

Connection type:

Flange connection according to DIN EN 1092-1 PN10/16, **DIN 11853-2** (L2a) / **11864-2 form A** (L2b) on request.

Body:

- Stainless steel 1.4408 (E)
- Aluminium AISi10Mg (A)

Flange:

- Stainless steel 1.4404 (E)



Valve finish:

Stainless steel: Electropolished matt

Satin polished (brushed) Ra 0.3 on request.
 Wetted parts = Ra 0.5

Aluminium: Powder coated 60-80µm RAL 9006

DN / Di (mm)	D1 (mm)	D2 (mm)	ø D3 (mm)	ø DF (mm)	nB	ø d (mm)	ø TK (mm)	L1 (mm)	L2 (mm)	L2a (mm)	L2b (mm)	G (inch)	H (mm)	¹ vol. (l) (approx.)	weight (kg) (EE)	weight (kg) (AE)
25	72	57	115	68	4	14	85	96	125	213	218	1/8"	36,5	0,09	2,4	1,9
32	80	66	140	78	4	18	100	104	130	226	241	1/4"	45	0,13	2,9	2,3
40	90	77	150	88	4	18	110	119	155	238	253	1/4"	50	0,22	4,0	3,1
50	110	88	165	106	4	18	125	149	185	264	279	1/4"	60	0,36	5,8	4,4
65	139	102	185	122	4	18	145	133	170	267	327	1/4"	73,5	0,44	5,7	4,9
80	172	126	200	138	4	18	160	173	213	309	373	1/4"	90	0,88	7,6	6,5
100	198	141	220	158	8	18	180	220	264	360	424	1/4"	107	1,80	10,3	8,2

¹ Number of holes

¹ Volume = Control volume with closed sleeve

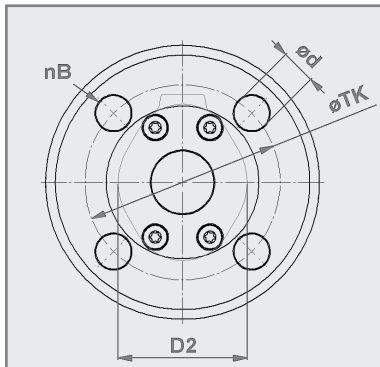
Technical details subject to change without notice.

AKO UK Ltd

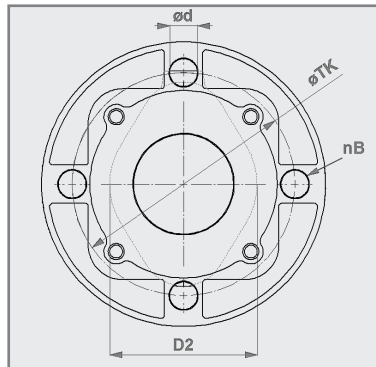
12 Rutherford Way, Drayton Fields Industrial Estate, Daventry, Northamptonshire, NN11 8XW

Tel: 01327 312 747 • Fax: 01327 312 565 • E-mail: sales@ako-valves.com • Web: www.pinch-valves.com

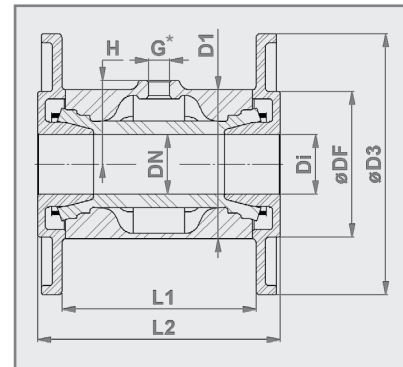
Air operated Pinch Valve - Flange connection



DN40 - DN50



DN65 - DN100



* ANSI/ASME B1.20.1 "NPT"

Connection type:

Flange connection according to ANSI B 16.5 / 150lbs

Body:

- Stainless steel 1.4408 (E)
- Aluminium AISi10Mg (A)

Flange:

- Stainless steel 1.4408 (E)
- Aluminium AISi10Mg with steel bushing (A)



Valve finish:

Stainless steel: Electropolished matt

Wetted parts = Ra 0.5

Aluminium: Powder coated 60-80µm RAL 9006

DN (mm)	Di (mm)	D1 (mm)	D2 (mm)	D3 (mm)	DF (mm)	nb	d (mm)	TK (mm)	L1 (mm)	L2 (mm) (EE/AE)	L2 (mm) (AA)	G (inch)	H (mm)	¹ vol. (l) (approx.)	weight (kg) (EE)	weight (kg) (AE)	weight (kg) (AA)
40	40,9	90	77	127	90	4	15,7	98,6	120	155	155	1/4"	50	0,22	3,4	2,5	2,0
50	52,6	110	88	152,4	92	4	19,1	120,7	149	187	187	1/4"	60	0,36	5,3	3,9	3,2
65	62,7	139	102	177,8	105	4	19,1	139,7	133	178	174	1/4"	73,5	0,44	5,9	5,3	3,7
80	78	172	126	190,3	127	4	19,1	152,4	173	221	217	1/4"	90	0,88	8,1	7,1	4,8
100	102,4	203	146	228,6	157	8	19,1	190,5	224	272	268	1/4"	107	1,80	11,4	9,3	7,4

^{*} Number of holes

¹ Volume = Control volume with closed sleeve

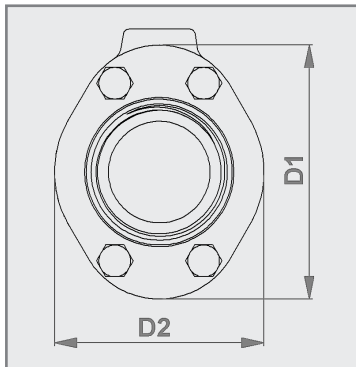
Technical details subject to change without notice.

AKO UK Ltd

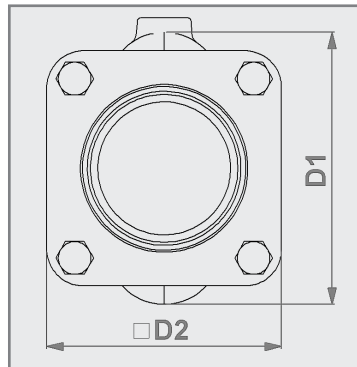
12 Rutherford Way, Drayton Fields Industrial Estate, Daventry, Northamptonshire, NN11 8XW

Tel: 01327 312 747 • Fax: 01327 312 565 • E-mail: sales@ako-valves.com • Web: www.pinch-valves.com

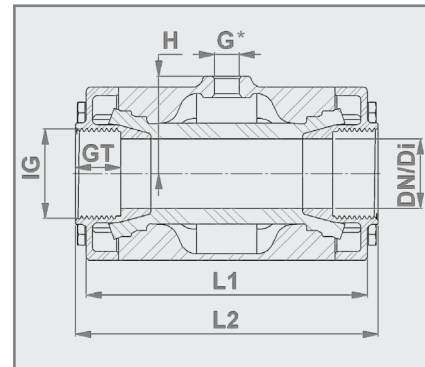
Air operated Pinch Valve - Internal Thread connection



DN10 - DN50



DN65 - DN100




* DIN EN ISO 228 "G"


Connection type:

Internal Thread Connection according to DIN EN ISO 228 "G" or ANSI/ASME B1.20.1 "NPT"

Body:

- DN10-100: Stainless steel 1.4408 (E)
- DN20-100: Aluminium AISi10Mg (A)
- DN10-15: Plastic POM natural white (P)
- DN10-15: Plastic POM conductive (P) 

(Internal Thread) Socket ends:

- DN10-100: Stainless steel 1.4404 (E)
- DN20-50: Plastic POM natural white (P), FDA approved
- DN20-50: Plastic POM conductive (P) for hazardous areas 



Valve finish:

Stainless steel: Electropolished matt

Aluminium: Powder coated 60-80µm RAL 9006

DN / Di (mm)	D1 (mm)	D2 (mm)	IG (inch)	GT (mm)	L1 (mm)	L2 (mm)	G (inch)	H (mm)	¹ vol. (l) (approx)	weight (kg) (EE)	weight (kg) (AE)	weight (kg) (AP)	weight (kg) (PE)
10	46	35	G ³ / ₈ "	12	68	80	1/8"	23	0,03	0,5	-	-	0,2
15	56	47	G ¹ / ₂ "	15	85	95	1/8"	28	0,05	0,8	-	-	0,3
20	62	49	G ³ / ₄ "	17	93	103	1/8"	31,5	0,07	0,9	0,5	0,4	-
25	72	57	G1"	20	110	120	1/8"	36,5	0,09	1,3	0,8	0,5	-
32	80	66	G1 ¹ / ₄ "	21	130	140	1/4"	45	0,13	1,7	1,1	0,7	-
40	90	77	G1 ¹ / ₂ "	21	150	160	1/4"	50	0,22	2,4	1,5	1,1	-
50	110	88	G2"	25	175	185	1/4"	60	0,36	3,6	2,2	1,6	-
65	139	115	G2 ¹ / ₂ "	30	173	200	1/4"	73,5	0,44	4,1	3,3	-	-
80	172	133	G3"	33	213	230	1/4"	90	0,88	5,8	4,7	-	-
100	198	141	G4"	20	264	280	1/4"	107	1,80	9,0	6,9	-	-

¹ Volume = Control volume with closed sleeve

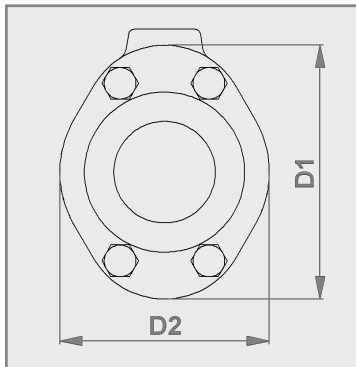
* Alternatively available is our K-variant → length = 150mm

Technical details subject to change without notice.

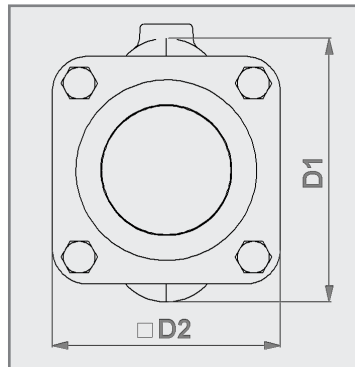
AKO UK Ltd

12 Rutherford Way, Drayton Fields Industrial Estate, Daventry, Northamptonshire, NN11 8XW
 Tel: 01327 312 747 • Fax: 01327 312 565 • E-mail: sales@ako-valves.com • Web: www.pinch-valves.com

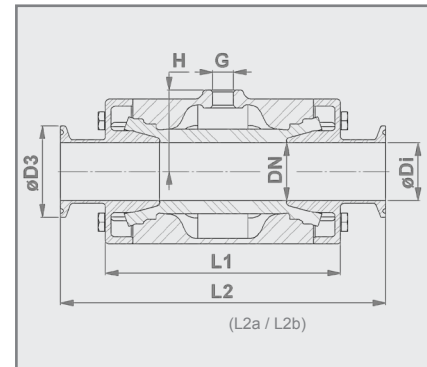
Air operated Pinch Valve - Tri-Clamp connection



DN10 - DN50



DN65 - DN100




* DIN EN ISO 228 "G"

Connection type:

Tri-Clamp according to DIN 32676, **DIN 11853-3 (L2a) / 11864-3 form A (L2b)** on request.

Body:

- DN10-100: Stainless steel 1.4408 (E)
- DN20-100: Aluminium AISi10Mg (A)
- DN10-15: Plastic POM natural white (P)
- DN10-15: Plastic POM conductive (P) 



Tri-Clamp Connection:

- DN10-100: Stainless steel 1.4404 (E)

Valve finish:

Stainless steel: Electropolished matt
 Satin polished (brushed) Ra 0.3 on request.
 Wetted parts = Ra 0.5

Aluminium: Powder coated 60-80µm RAL 9006

Valve face to face length:

DN10: Acc. to DIN EN 558 row 27
 DN15-50: Acc. to DIN EN 558 row 1
 DN 65-80: Acc. to DIN EN 558 row 7

DN (mm)	ø Di (mm)	D1 (mm)	D2 (mm)	ø D3 (mm)	L1 (mm)	L2 (mm)	L2a (mm)	L2b (mm)	G (inch)	H (mm)	¹ vol. (l) (approx.)	weight (kg) (EE)	weight (kg) (AE)	weight (kg) (PE)
10	10	46	35	34	80	115	162	190	1/8"	23	0,03	0,5	-	0,3
15	16	56	47	34	95	130	187	215	1/8"	28	0,05	0,9	-	0,4
20	20	62	49	34	103	150	199	227	1/8"	31	0,07	1,0	0,6	-
25	26	72	57	50,50	120	160	212	241	1/8"	36	0,09	1,5	1,0	-
32	32	80	66	50,50	140	180	229	267	1/4"	45	0,13	1,9	1,3	-
40	38	90	77	50,50	160	200	241	279	1/4"	50	0,22	2,6	1,7	-
50	50	110	88	64	185	230	268	304	1/4"	60	0,36	3,9	2,5	-
65	65	139	115	91	173	216	272	332	1/4"	73,5	0,44	4,3	3,6	-
80	80	172	133	106	213	254	314	374	1/4"	90	0,88	6,2	5,0	-
100	100	198	141	119	264	305	368	428	1/4"	107	1,80	9,4	7,3	-

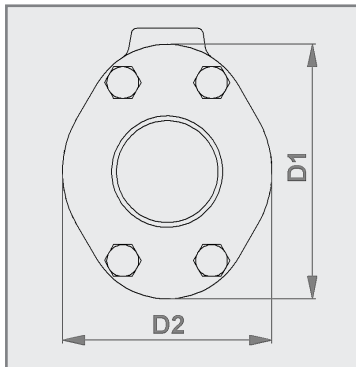
¹Volume = Control volume with closed sleeve

Technical details subject to change without notice.

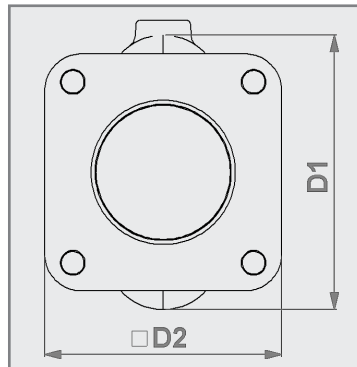
AKO UK Ltd

12 Rutherford Way, Drayton Fields Industrial Estate, Daventry, Northamptonshire, NN11 8XW
 Tel: 01327 312 747 ▪ Fax: 01327 312 565 ▪ E-mail: sales@ako-valves.com ▪ Web: www.pinch-valves.com

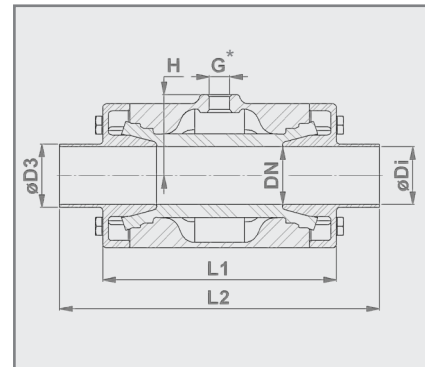
Air operated Pinch Valve - Weld-on ends



DN10 - DN50



DN65 - DN100




* DIN EN ISO 228 "G"

Connection type:

Weld-on ends according to DIN 11850 row 2

Body:

- DN10-100: Stainless steel 1.4408 (E)
- DN20-100: Aluminium AISi10Mg (A)
- DN10-15: Plastic POM natural white (P)
- DN10-15: Plastic POM conductive (P) 



Weld-on ends:

- DN10-100: Stainless steel 1.4404 (E)

Valve finish:

Stainless steel: Electropolished matt
 Satin polished (brushed) Ra 0.3 on request.
 Wetted parts = Ra 0.5

Aluminium: Powder coated 60-80µm RAL 9006

Valve face to face length:

DN 10: Acc. to DIN EN 558 row 27
 DN 15-50: Acc. to DIN EN 12982 row 61
 DN 65-80: Acc. to DIN EN 558 row 7

DN (mm)	ø D1 (mm)	D1 (mm)	D2 (mm)	ø D3 (mm)	L1 (mm)	L2 (mm)	G (inch)	H (mm)	¹ vol. (l) (approx.)	weight (kg) (EE)	weight (kg) (AE)	weight (kg) (PE)
10	10	46	35	13x1,5	68	115	1/8"	23	0,03	0,5	-	0,3
15	16	56	47	19x1,5	85	140	1/8"	28	0,05	0,8	-	0,4
20	20	62	49	23x1,5	93	152	1/8"	31	0,07	1,0	0,6	-
25	26	72	57	29x1,5	110	165	1/8"	36	0,09	1,4	0,9	-
32	32	80	66	35x1,5	130	178	1/4"	45	0,13	1,9	1,2	-
40	38	90	77	41x1,5	150	190	1/4"	50	0,22	2,5	1,6	-
50	50	110	88	53x1,5	175	216	1/4"	60	0,36	3,8	2,5	-
65	65	139	115	70x2	173	216	1/4"	73,5	0,44	4,2	3,4	-
80	80	172	133	85x2	213	254	1/4"	90	0,88	6,0	4,9	-
100	100	198	141	104x2	264	305	1/4"	107	1,80	9,3	7,2	-

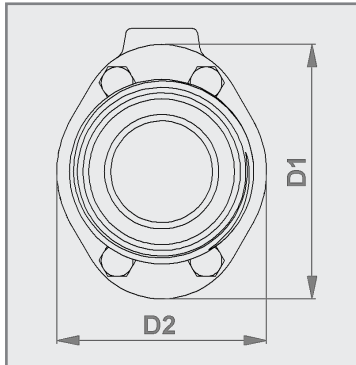
¹ Volume = Control volume with closed sleeve

Technical details subject to change without notice.

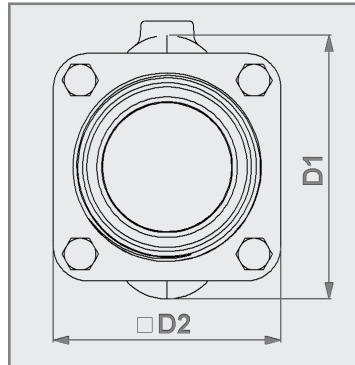
AKO UK Ltd

12 Rutherford Way, Drayton Fields Industrial Estate, Daventry, Northamptonshire, NN11 8XW
 Tel: 01327 312 747 • Fax: 01327 312 565 • E-mail: sales@ako-valves.com • Web: www.pinch-valves.com

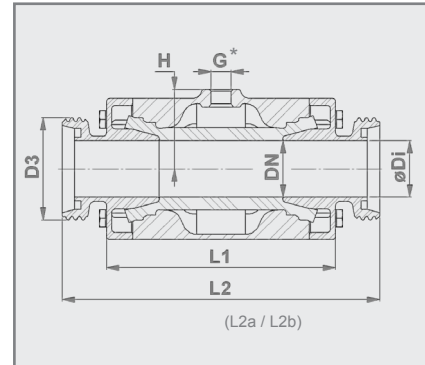
Air operated Pinch Valve - Threaded spigot



DN10 - DN50



DN65 - DN100




* DIN EN ISO 228 "G"

Connection type:

Threaded spigot according to DIN 11851, **DIN 11853-1 (L2a)** / **11864-1 form A (L2b)** on request.

Body:

- DN10-100: Stainless steel 1.4408 (E)
- DN20-100: Aluminium AISi10Mg (A)
- DN10-15: Plastic POM natural white (P)
- DN10-15: Plastic POM conductive (P) 



Threaded spigot:

- DN10-100: Stainless steel 1.4404 (E)

Valve finish:

Stainless steel: Electropolished matt
 Satin polished (brushed) Ra 0.3 on request.
 Wetted parts = Ra 0.5

Aluminium: Powder coated 60-80µm RAL 9006

Valve face to face length:

DN 10: Acc. to DIN EN 558 row 27

DN 15-50: Acc. to DIN EN 558 row 1

DN (mm)	ø D1 (mm)	D1 (mm)	D2 (mm)	D3	G (inch)	H (mm)	L1 (mm)	L2 (mm)	L2a (mm)	L2b (mm)	¹ vol. (l) (approx.)	weight (kg) (EE)	weight (kg) (AE)	weight (kg) (PE)
10	10	46	35	Rd28x1/8"	1/8"	23	68	115	153	197	0,03	0,5	-	0,3
15	16	56	47	Rd34x1/8"	1/8"	28	85	130	178	222	0,05	0,9	-	0,4
20	20	62	49	Rd44x1/6"	1/8"	31	93	150	194	238	0,07	1,1	0,7	-
25	26	72	57	Rd52x1/6"	1/8"	36	110	160	217	251	0,09	1,6	1,1	-
32	32	80	66	Rd58x1/6"	1/4"	45	130	180	238	274	0,13	2,1	1,5	-
40	38	90	77	Rd65x1/6"	1/4"	50	150	200	252	286	0,22	2,8	1,9	-
50	50	110	88	Rd78x1/6"	1/4"	60	175	230	278	312	0,36	4,2	2,9	-
65	65	139	115	Rd95x1/6"	1/4"	73,5	173	296	336	336	0,44	4,9	4,1	-
80	80	172	133	Rd110x1/4"	1/4"	90	213	344	382	382	0,88	7,0	5,9	-
100	100	198	141	Rd130x1/4"	1/4"	107	264	413	405	433	1,80	10,6	8,5	-

¹ Volume = Control volume with closed sleeve

Technical details subject to change without notice.

AKO UK Ltd

12 Rutherford Way, Drayton Fields Industrial Estate, Daventry, Northamptonshire, NN11 8XW

Tel: 01327 312 747 • Fax: 01327 312 565 • E-mail: sales@ako-valves.com • Web: www.pinch-valves.com